

## Phonic beetle drive

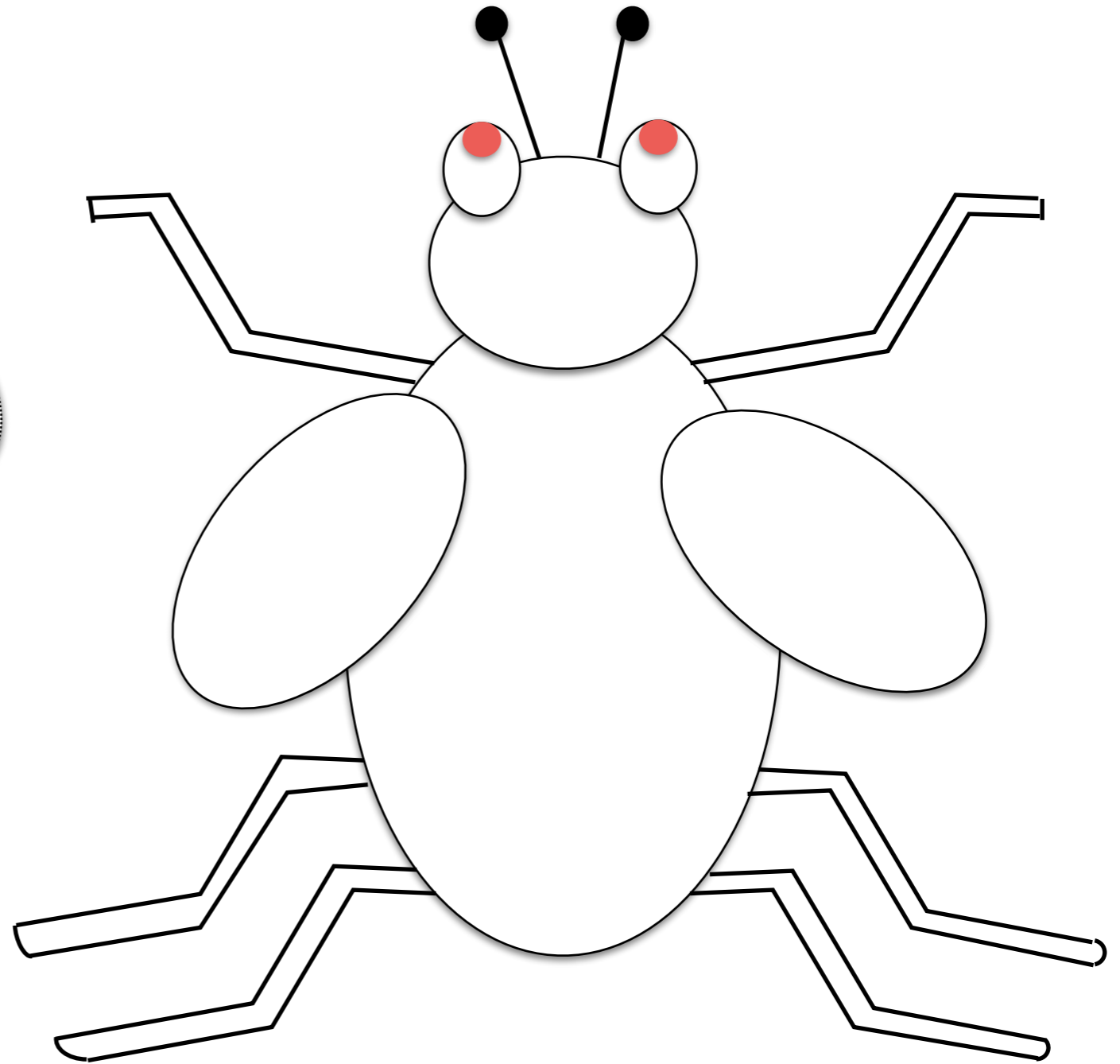
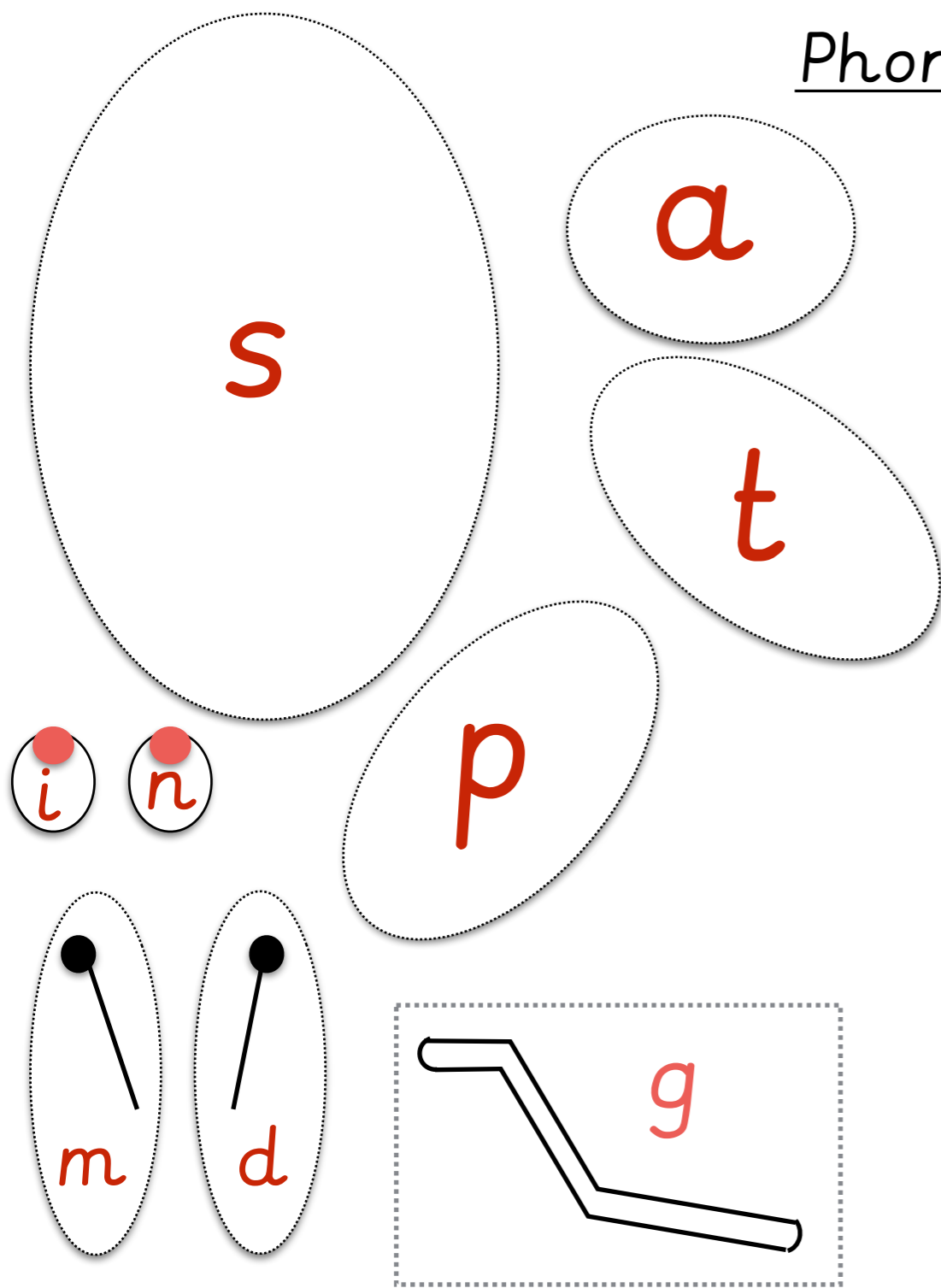
You will need: phonic dice and a beetle sheet for each player.

Player 1 will shake and roll the dice, look and read the graphemes and colour in any that correspond to those on their sheet. Once they have coloured the corresponding body parts they pass the dice to the next player. If a player rolls a grapheme that they have already coloured they will pass the dice on to the next player.

Players will need to roll the grapheme 'g' six times to colour all of the beetle's legs.

The winner is the player who colours their beetle in first.

# Phonic Beetle Drive



s=body  
p= wing  
m= antenna

a= head  
i=eye  
d=antenna

t = wing  
n= eye  
g=leg